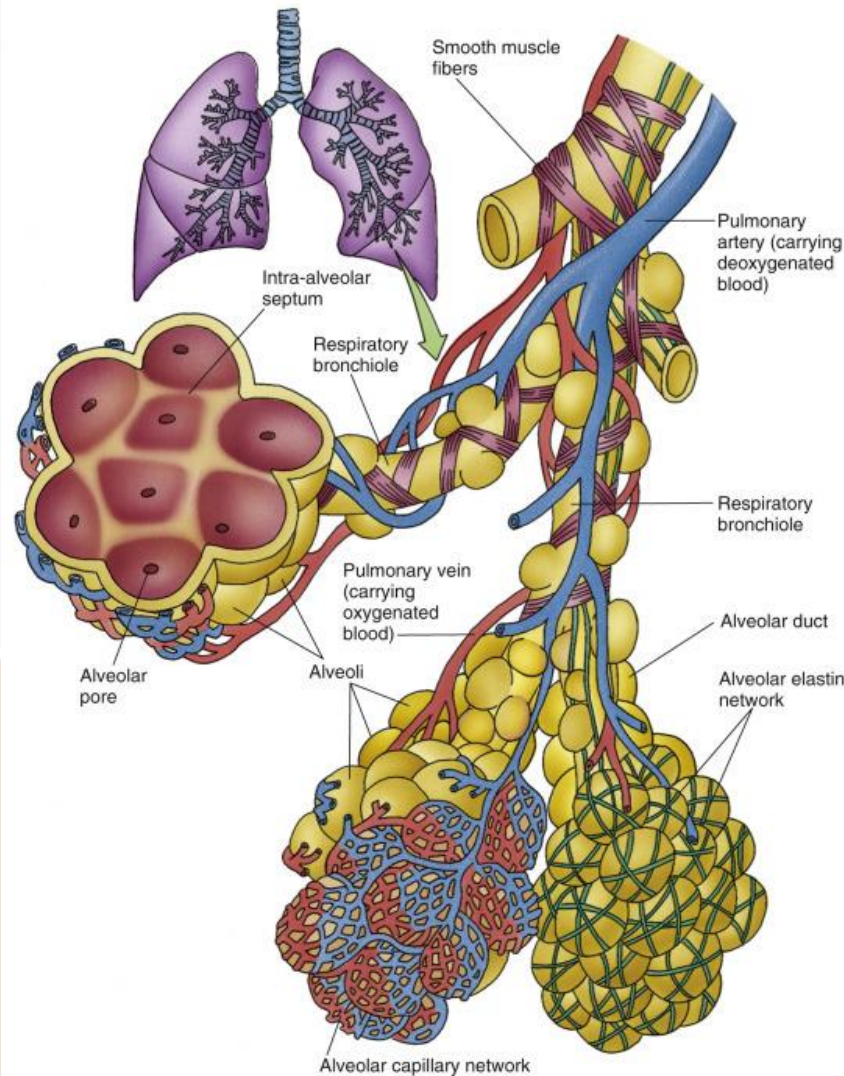
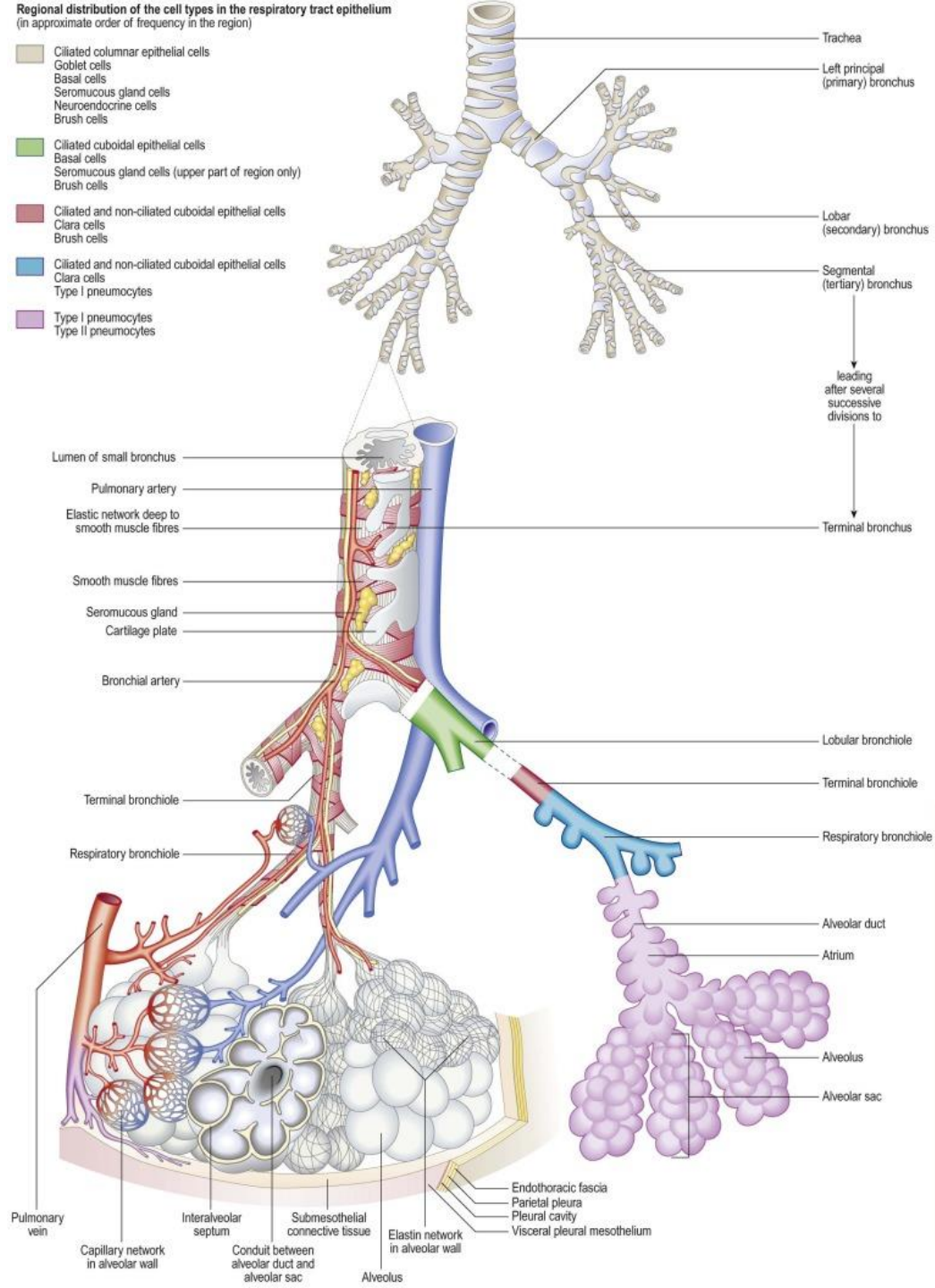


Regional distribution of the cell types in the respiratory tract epithelium
(in approximate order of frequency in the region)

- Ciliated columnar epithelial cells
Goblet cells
Basal cells
Seromucous gland cells
Neuroendocrine cells
Brush cells
- Ciliated cuboidal epithelial cells
Basal cells
Seromucous gland cells (upper part of region only)
Brush cells
- Ciliated and non-ciliated cuboidal epithelial cells
Clara cells
Brush cells
- Ciliated and non-ciliated cuboidal epithelial cells
Clara cells
Type I pneumocytes
- Type I pneumocytes
Type II pneumocytes



Bronchiolar epithelial cell types:

Brush

Neuroendocrine

Ciliated

Non-ciliated

Clara

Interalveolar septum

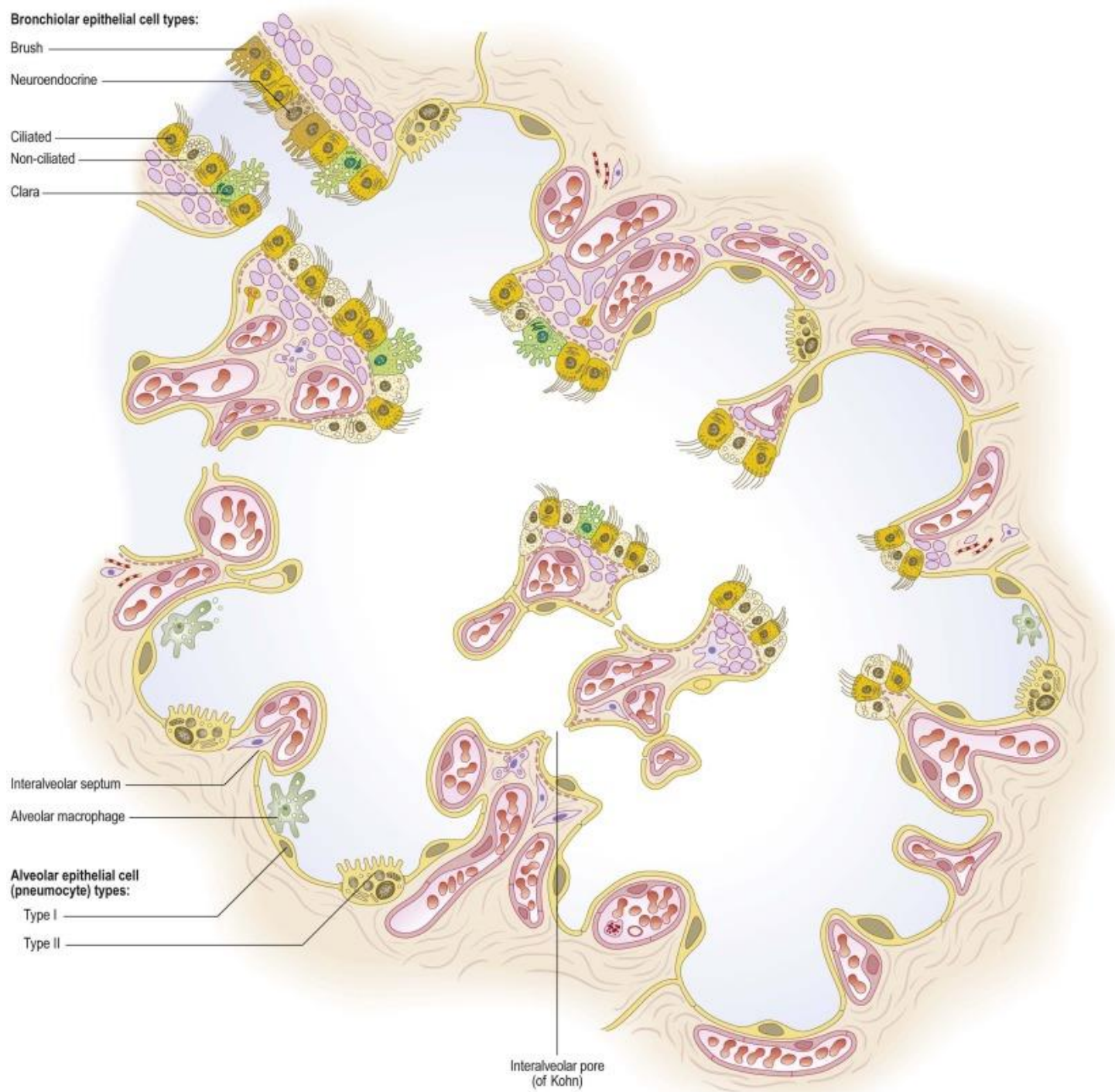
Alveolar macrophage

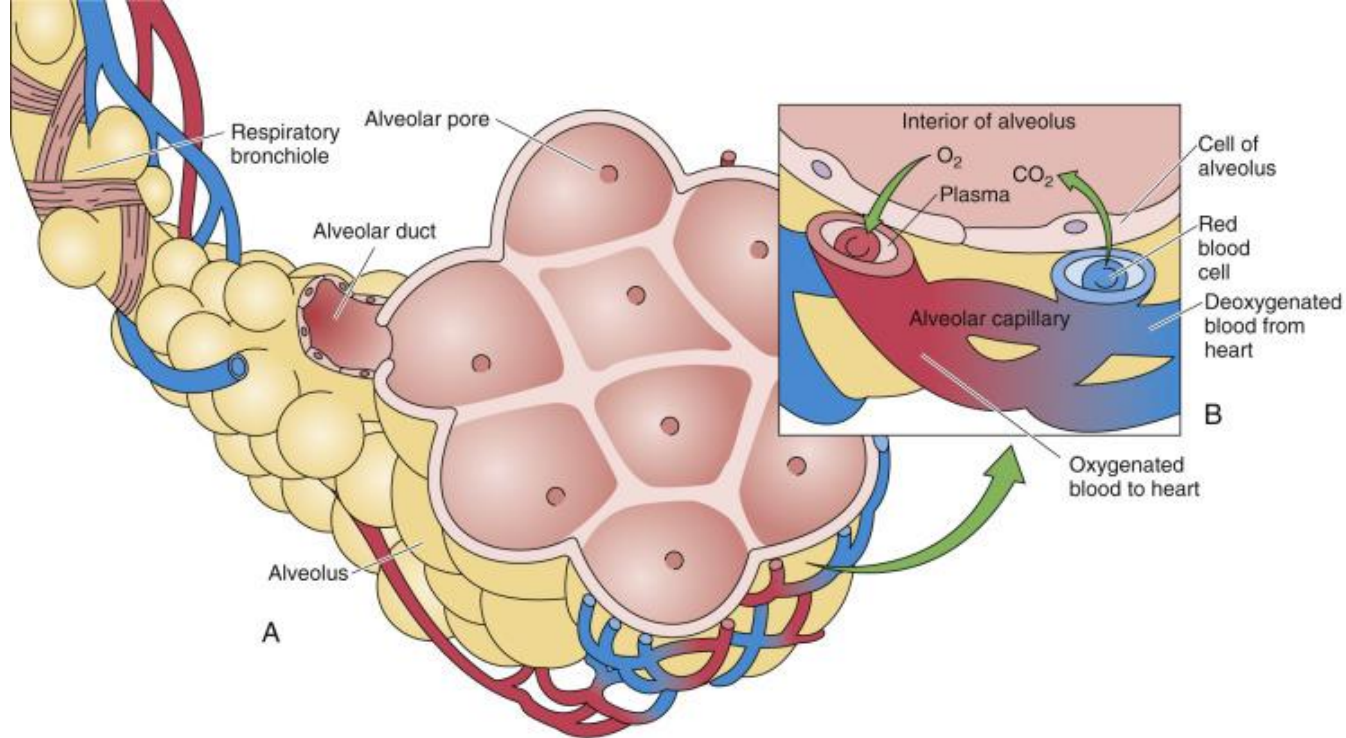
Alveolar epithelial cell (pneumocyte) types:

Type I

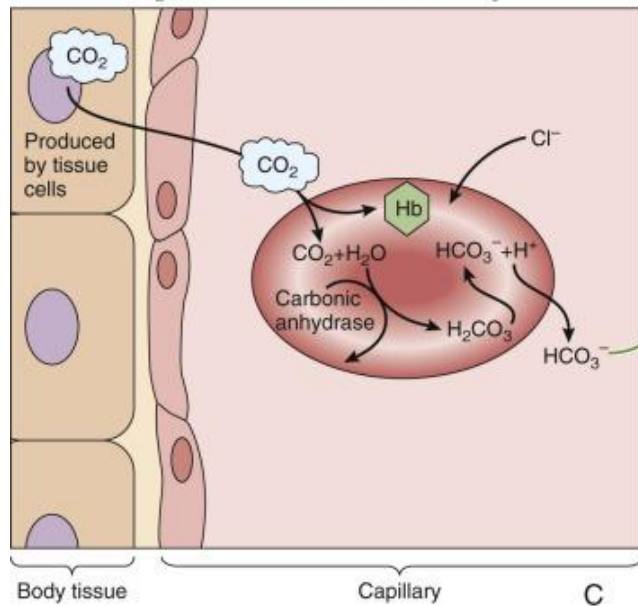
Type II

Interalveolar pore
(of Kohn)

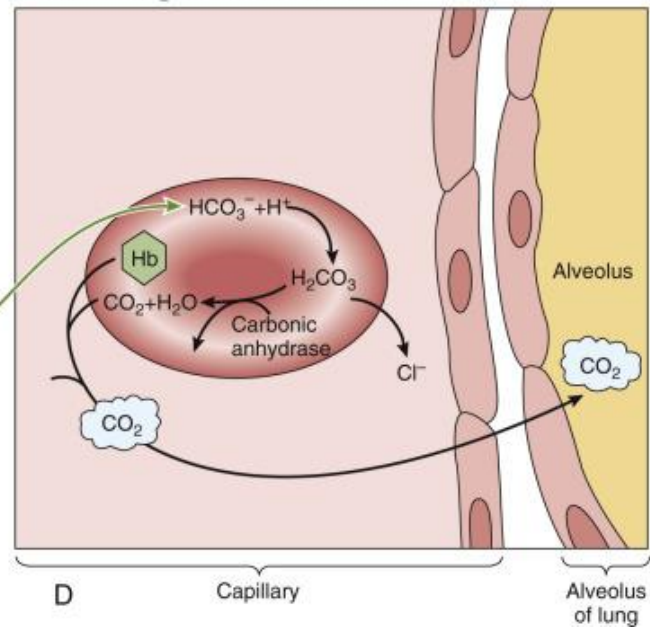




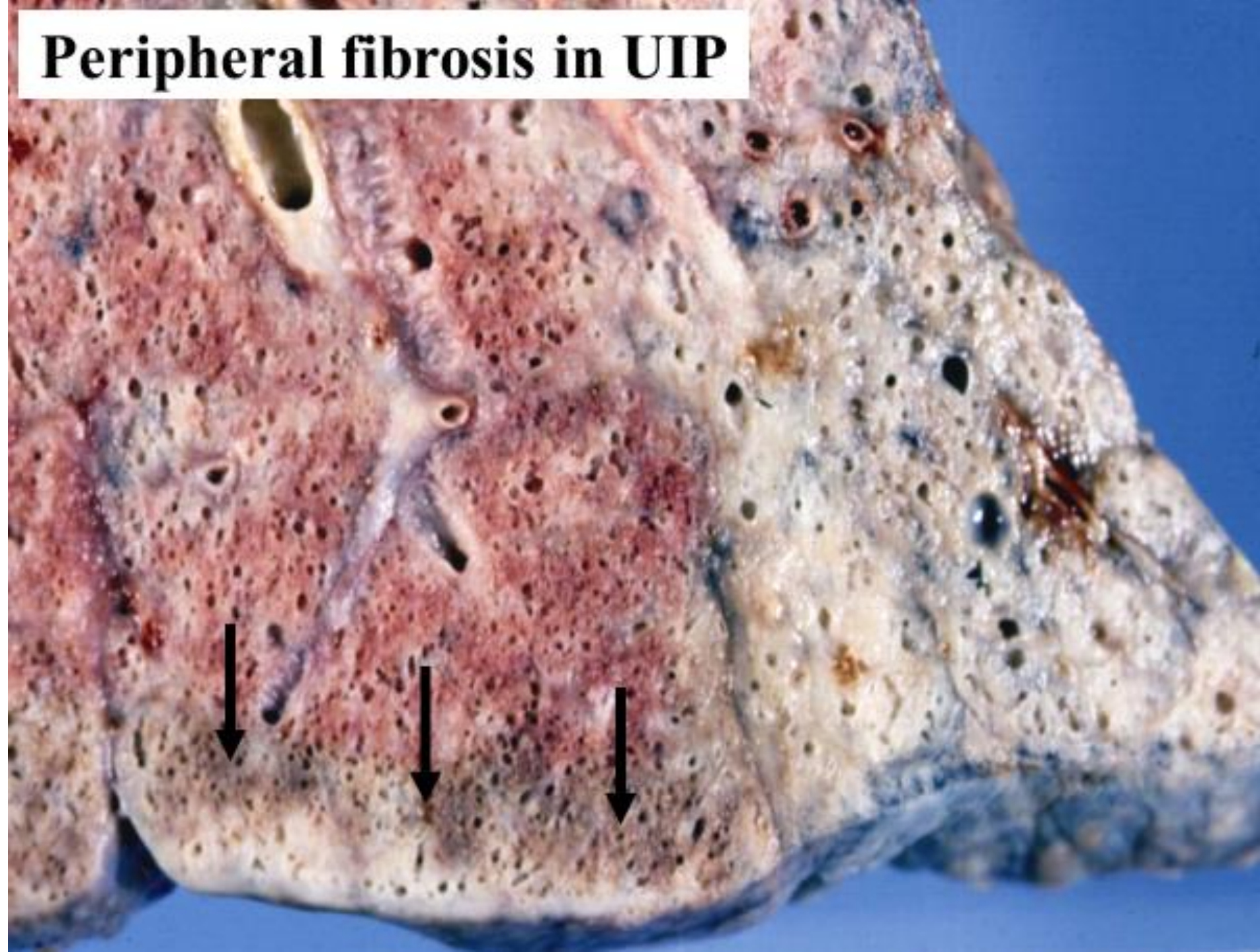
Diffusion of CO_2 into blood and conversion to HCO_3^-

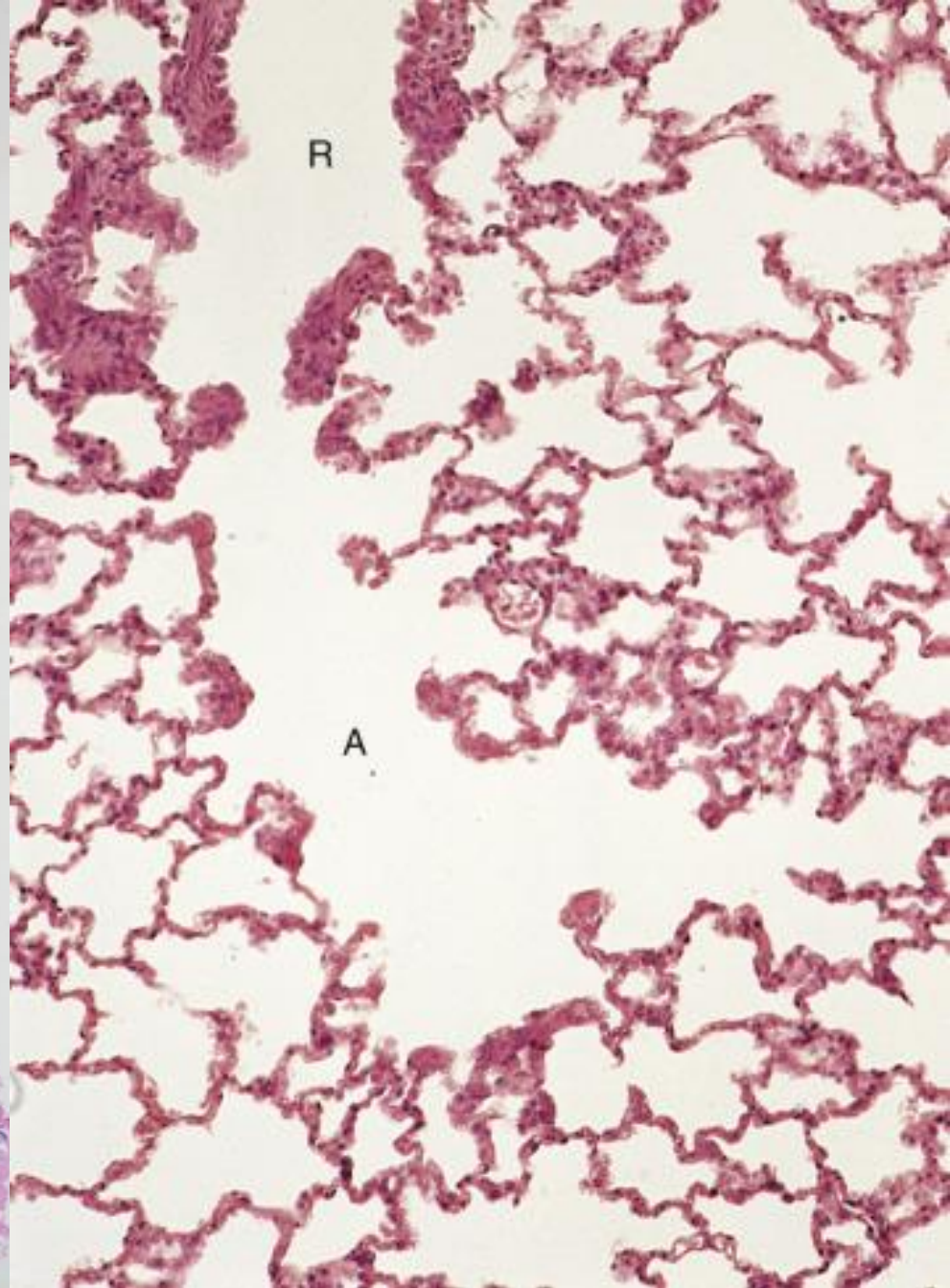
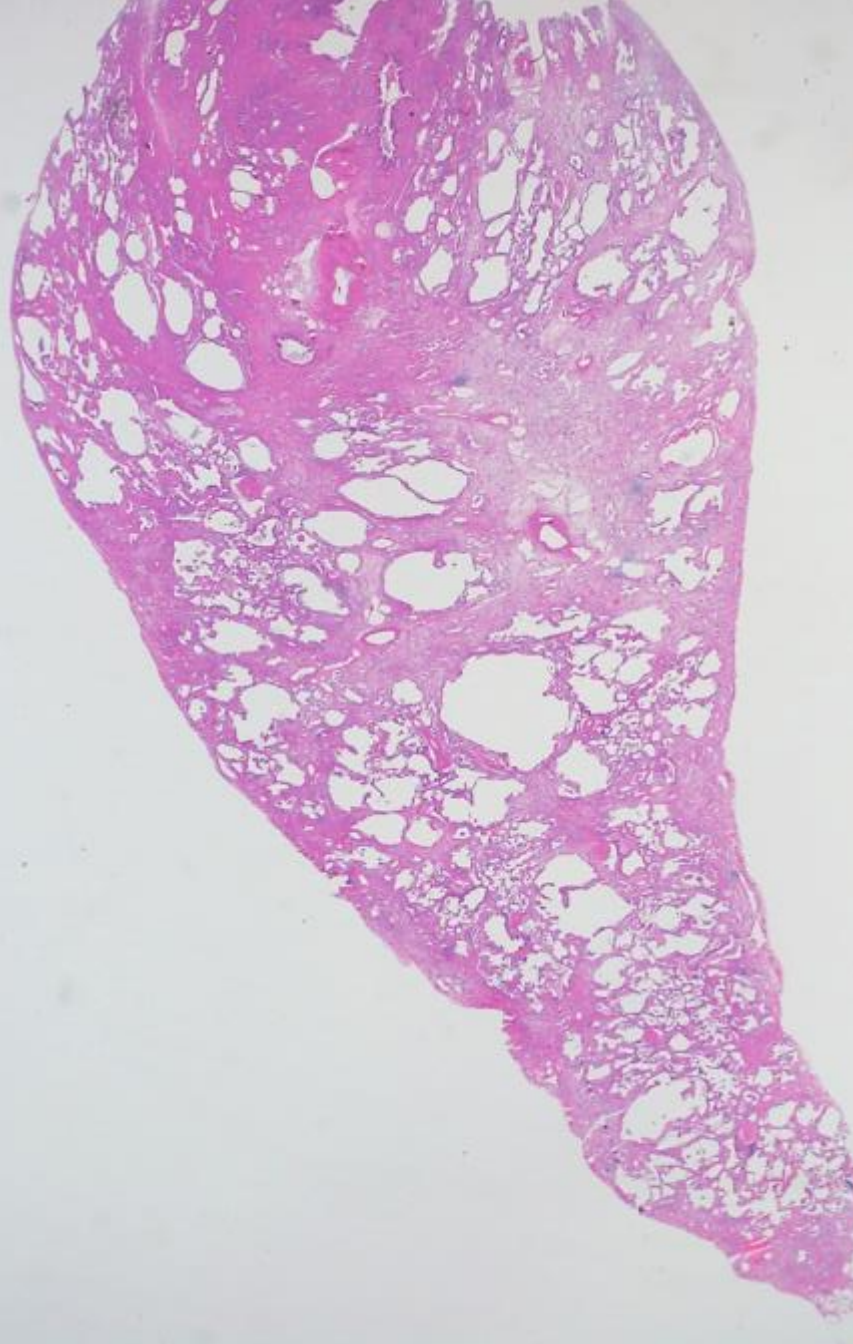


Diffusion of CO_2 out of blood into alveolus



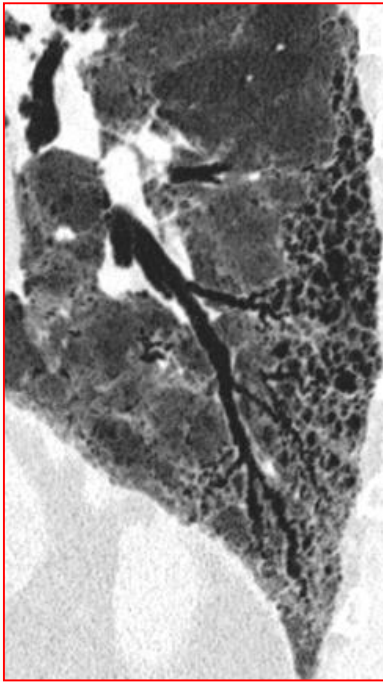
Peripheral fibrosis in UIP



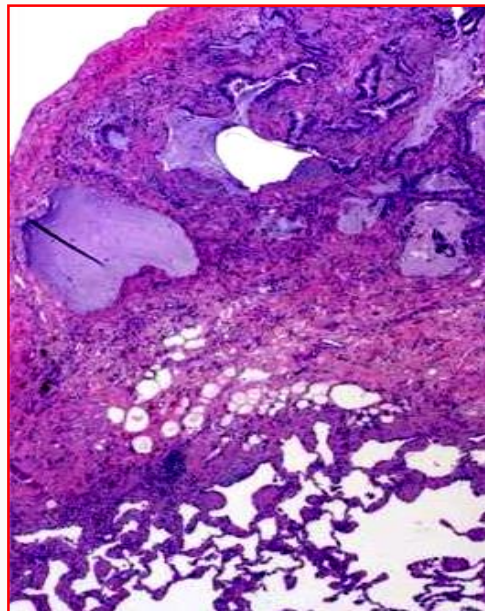


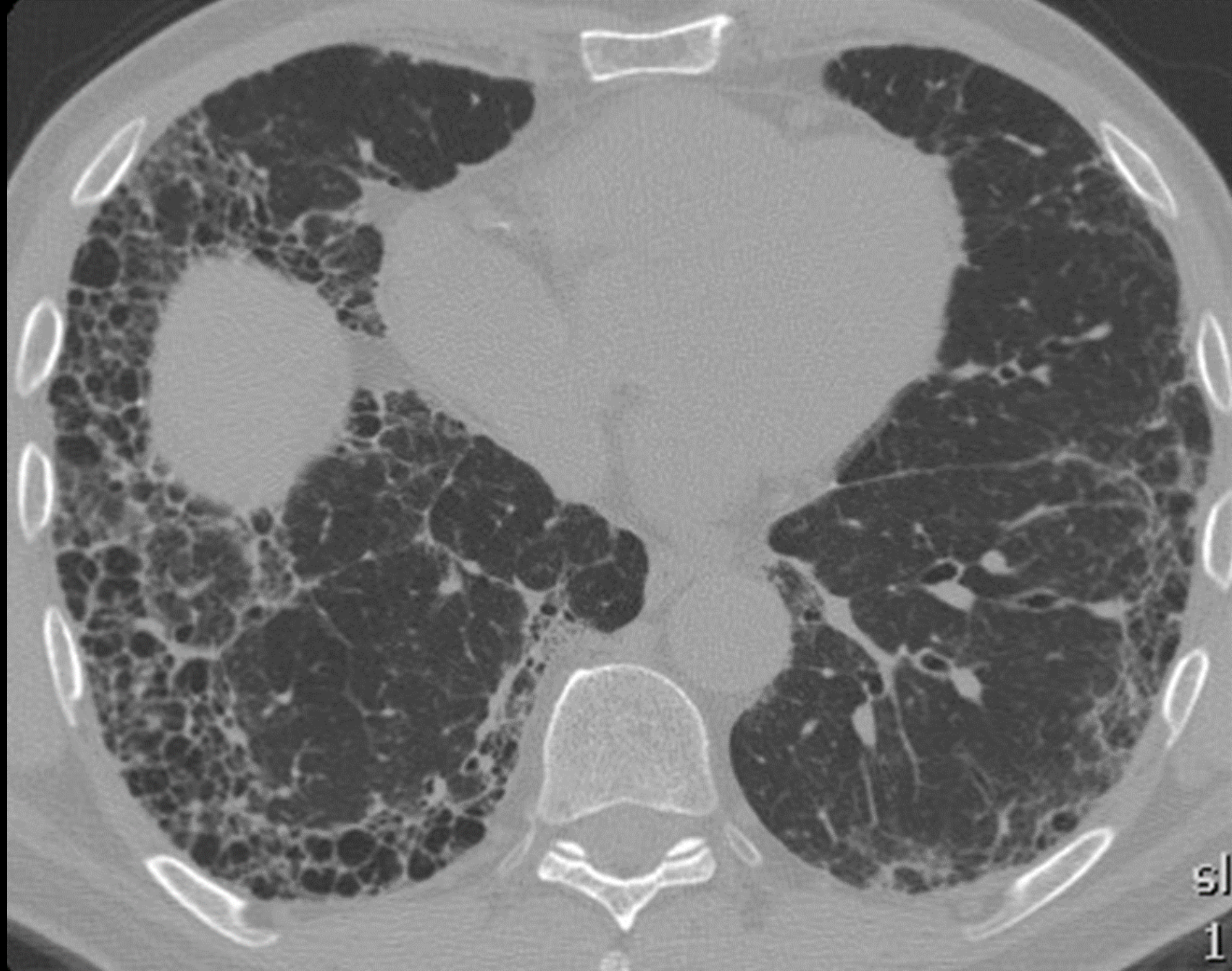


IPF



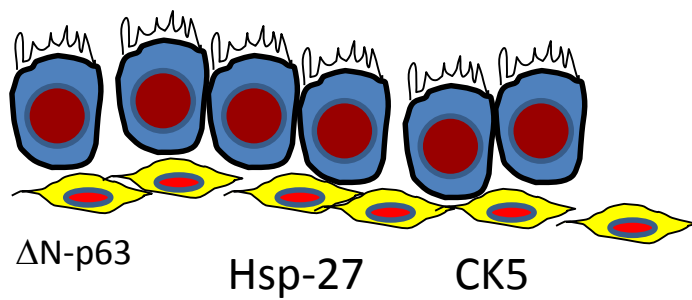
- **Età**
- **Fumo**
- **Familiare vs sporadica**
- **Disposizione anatomica**



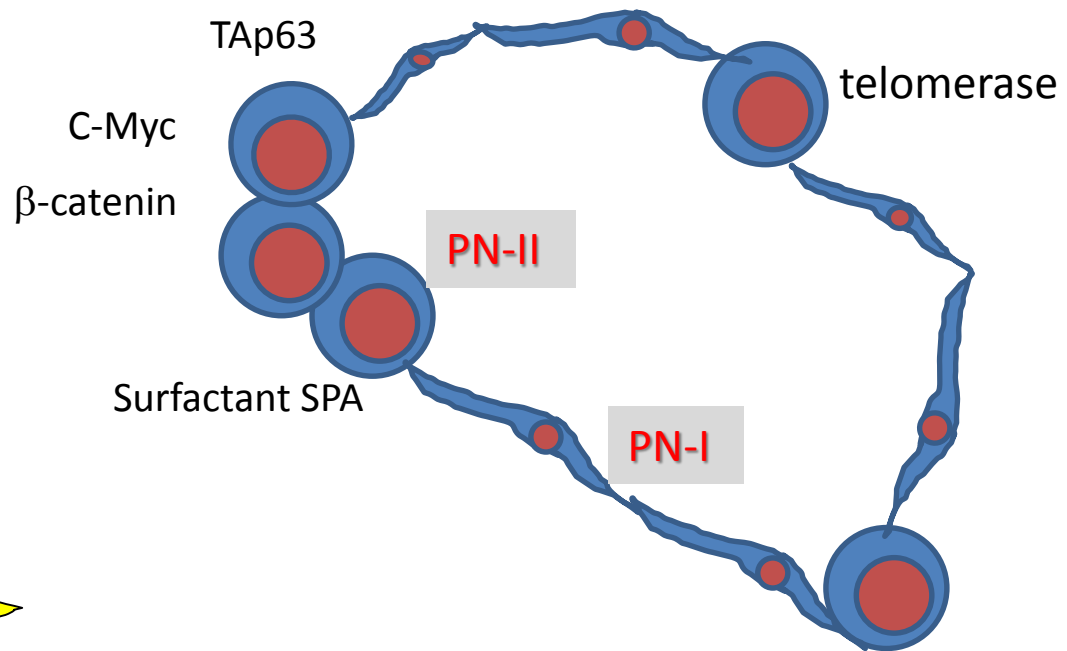


PATOGENESI DELLA IPF

BRONCHIOLI



ALVEOLI



paolo giordano

la solitudine dei numeri primi

romanzo

MONDADORI

WILDSIDE e MEDUSA FILM
PRESENTANO

67
VENEZIA CINEMA 2020

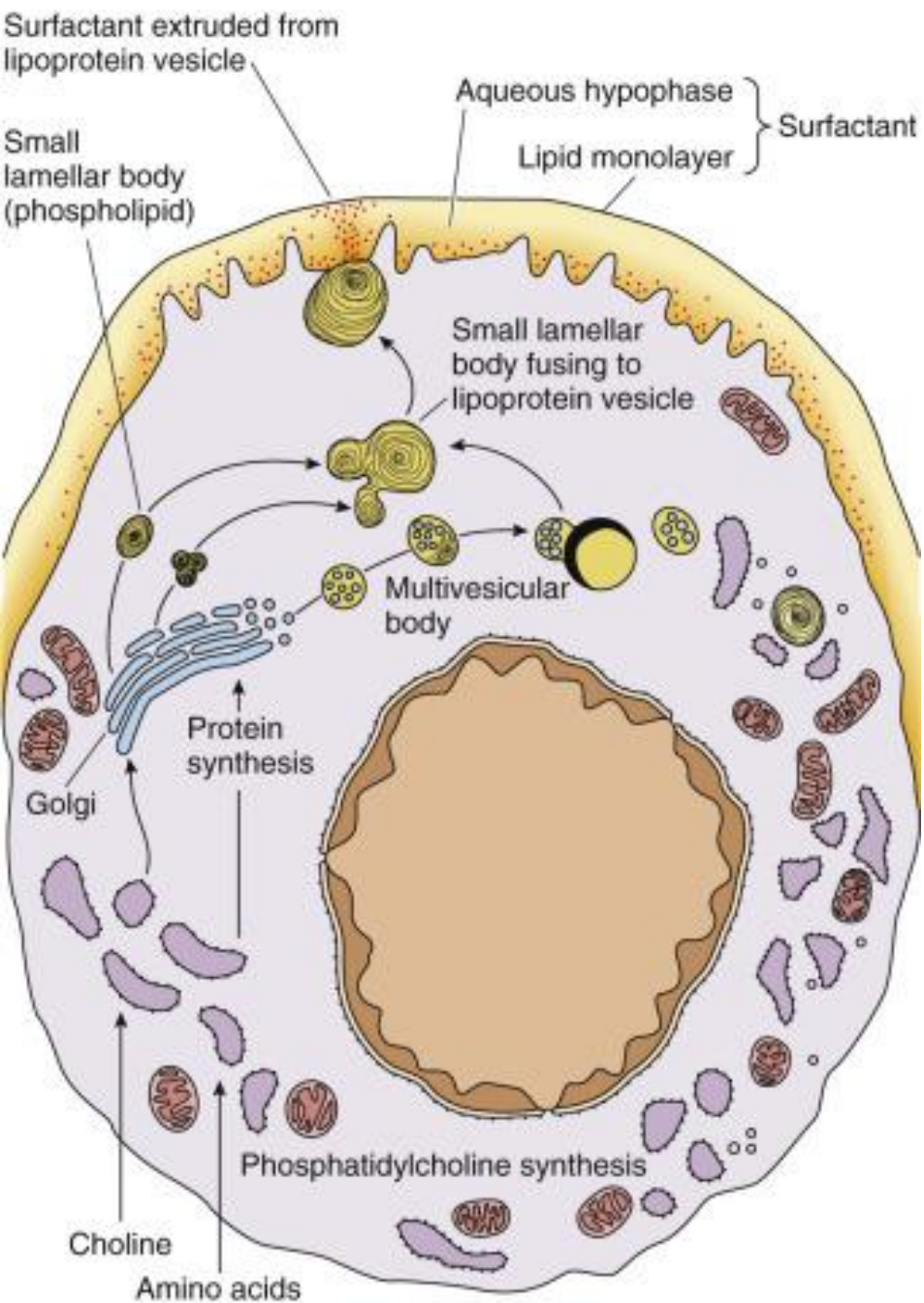
"DAL ROMANZO DI PAOLO GIORDANO"

LA SOLITUDINE DEI NUMERI PRIMI

REGIA DI SAVERIO COSTANZO

www.repubblica.it/la-solitudine-dei-numeri-primi





PNEUMOCITA tipo ii

CELLULA STAMINALE ALVEOLARE

EPITHELIAL STEM CELL EXHAUSTION IN THE PATHOGENESIS OF IDIOPATHIC PULMONARY FIBROSIS

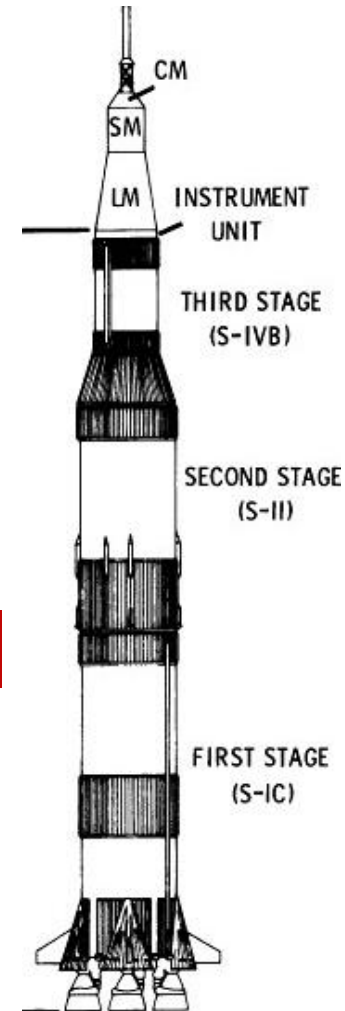
M. Chilosi¹, C. Doglion², B. Murer³, V. Poletti⁴

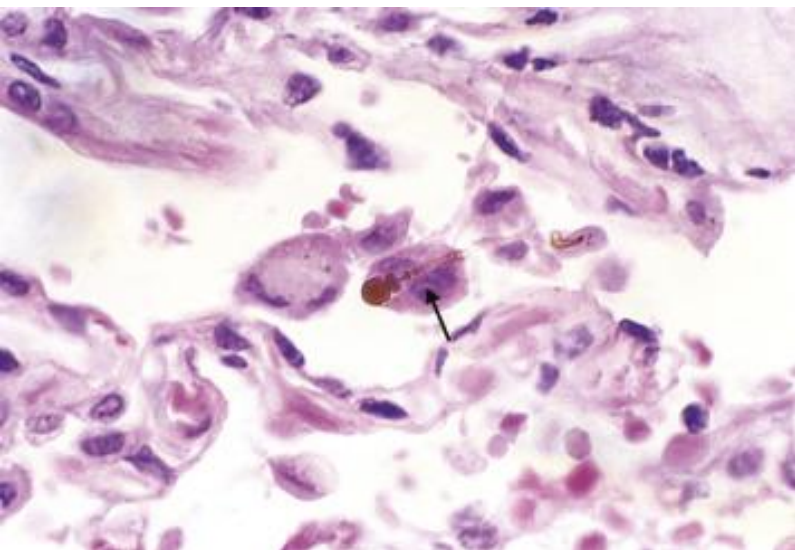
REVIEW ARTICLE

Premature lung aging and cellular senescence in the pathogenesis of idiopathic pulmonary fibrosis and COPD/emphysema

MARCO CHILOSI, ANGELO CARLONI, ANDREA ROSSI, and VENERINO POLETTI
VERONA, TERNE, AND FORLÌ, ITALY

Transl Res 2013





CELLUE ALVEOLARI STAMINALI NELLA IPF

FATTORI ESOGENI

- *FUMO
- *INQUINAMENTO

FATTORI ENDOGENI (forme familiari)

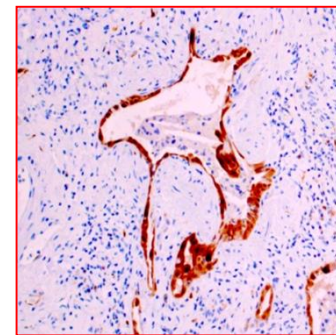
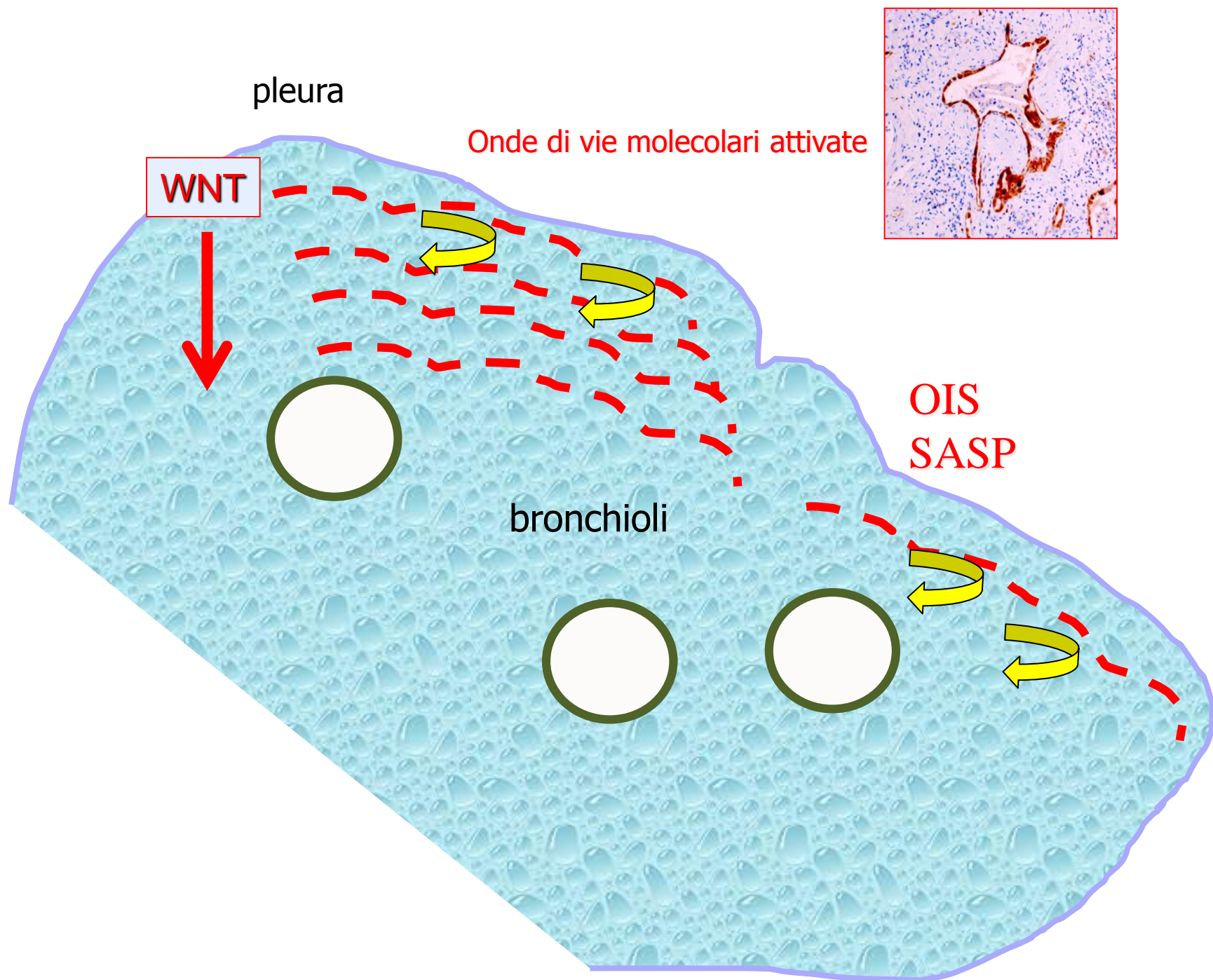
- *MUTAZIONI
- *POLIMORFISMI

Biblioteca Adelphi 358

Sándor Márai

LE BRACI







RIMODELLAMENTO NELLA IPF

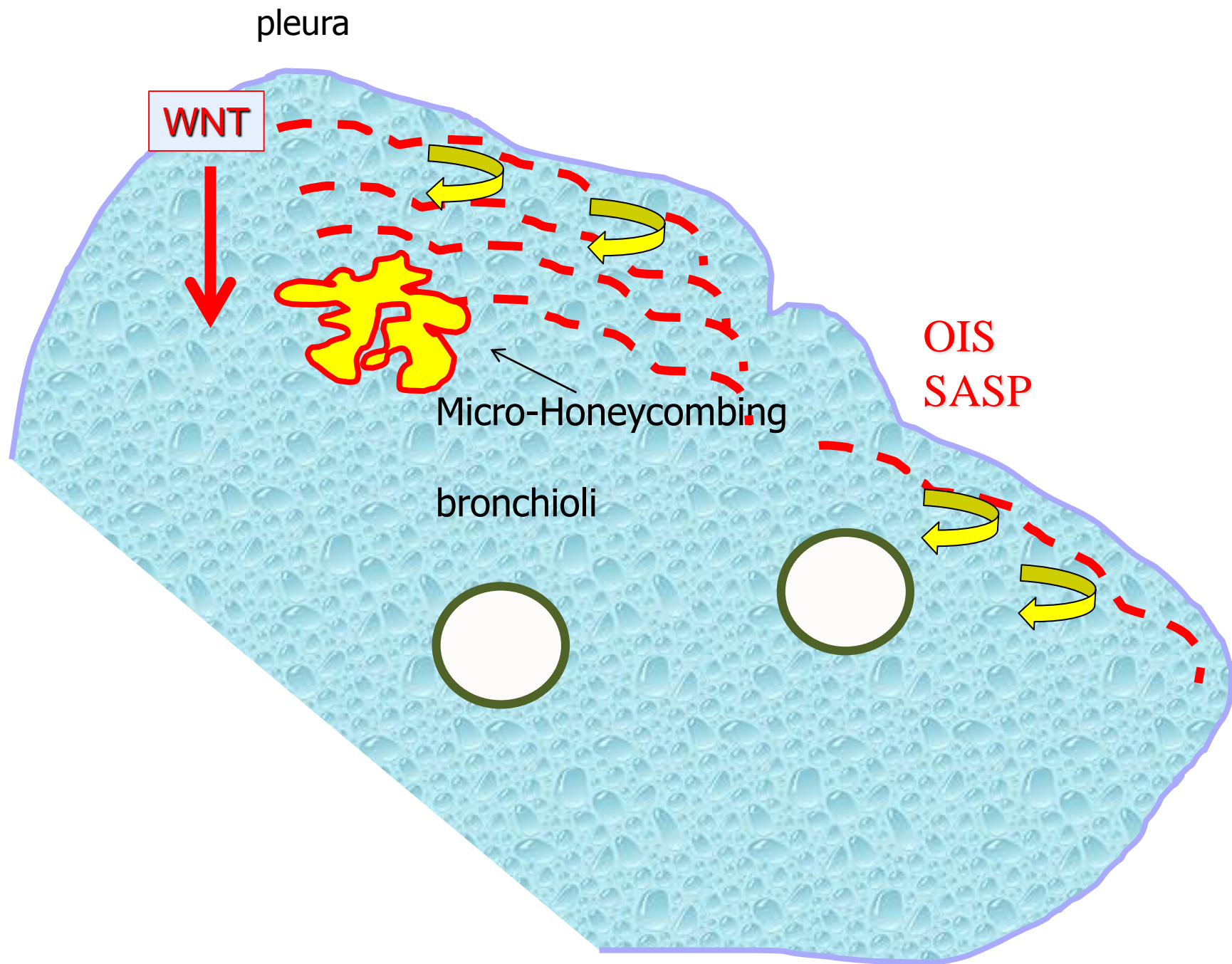
A “gioco truccato” fra componente bronchiolare e alveolare

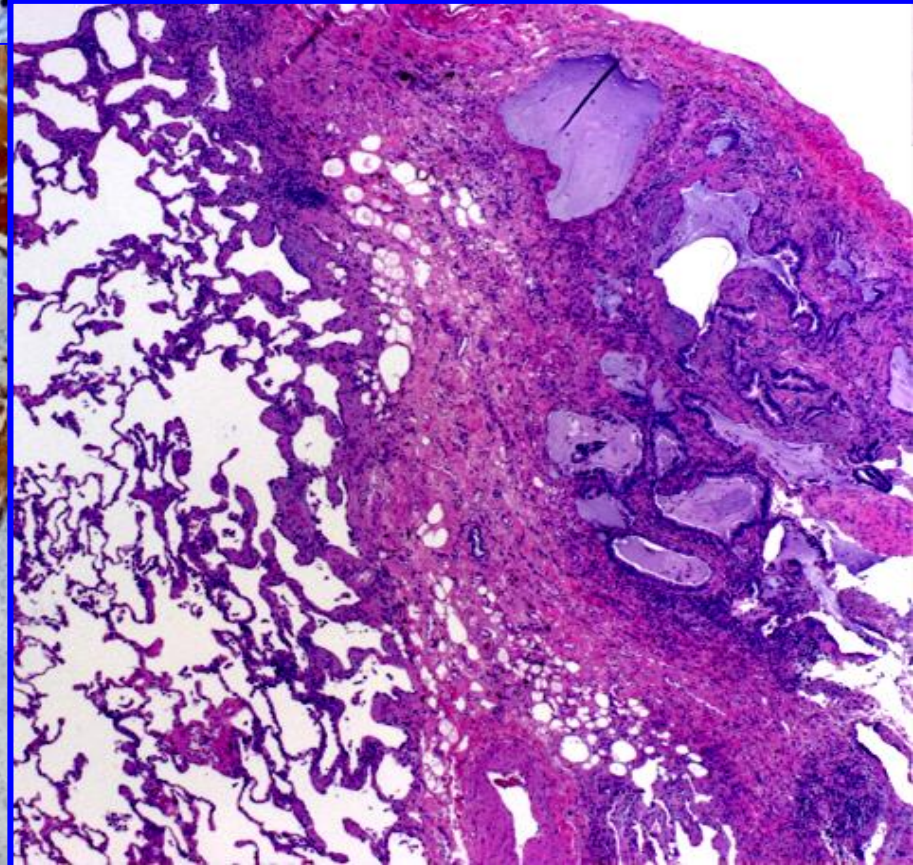
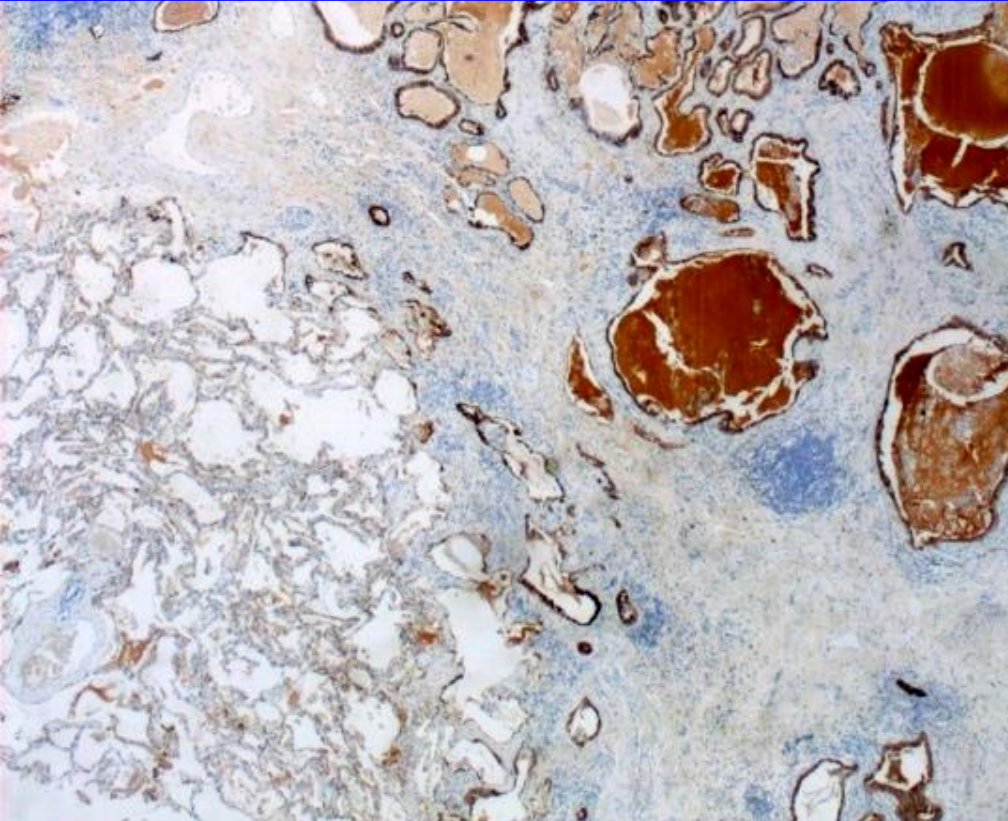
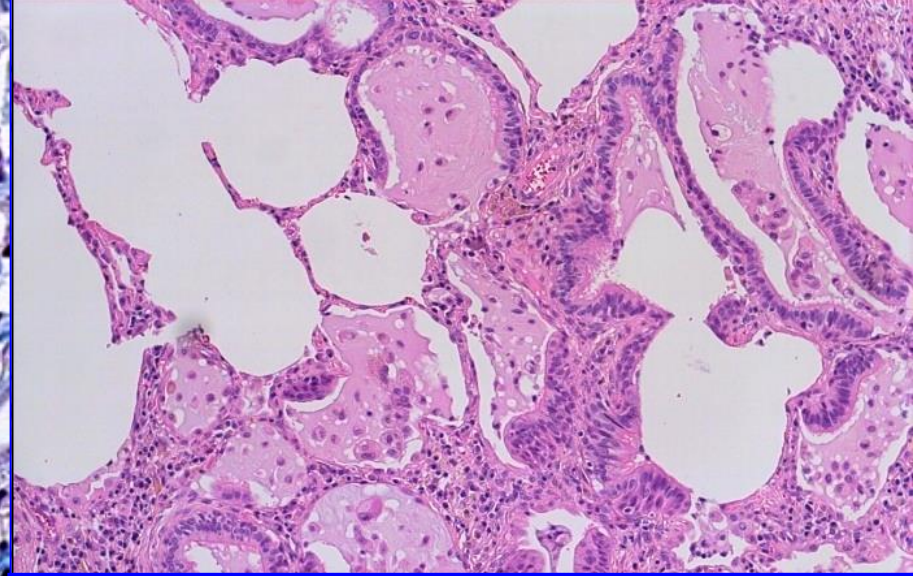
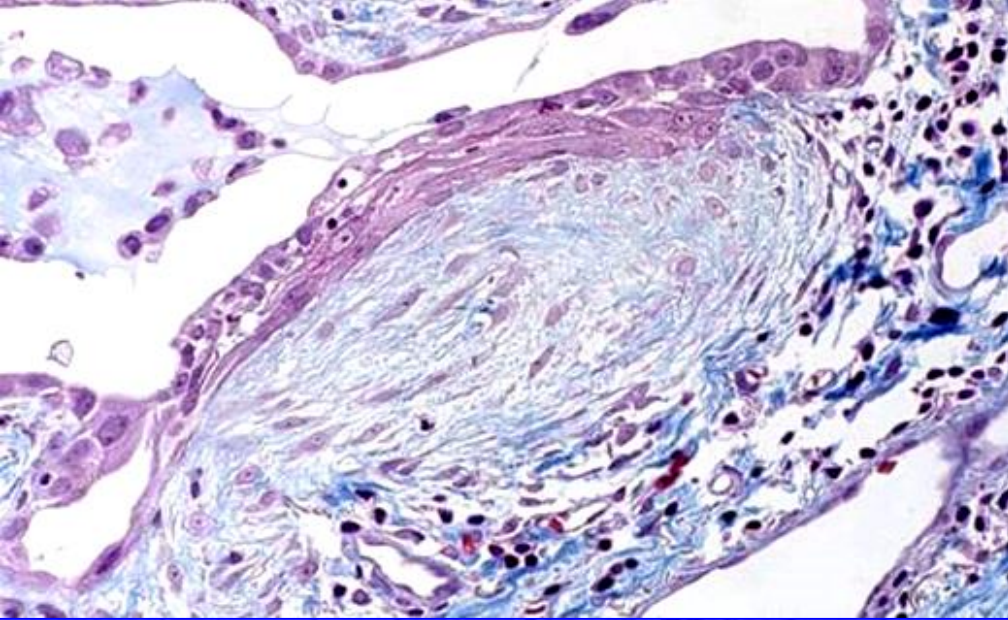
Omero
ILIADÉ

a cura di Maria Grazia Ciani



GRANDI CLASSICI **tascabili** Marsilio





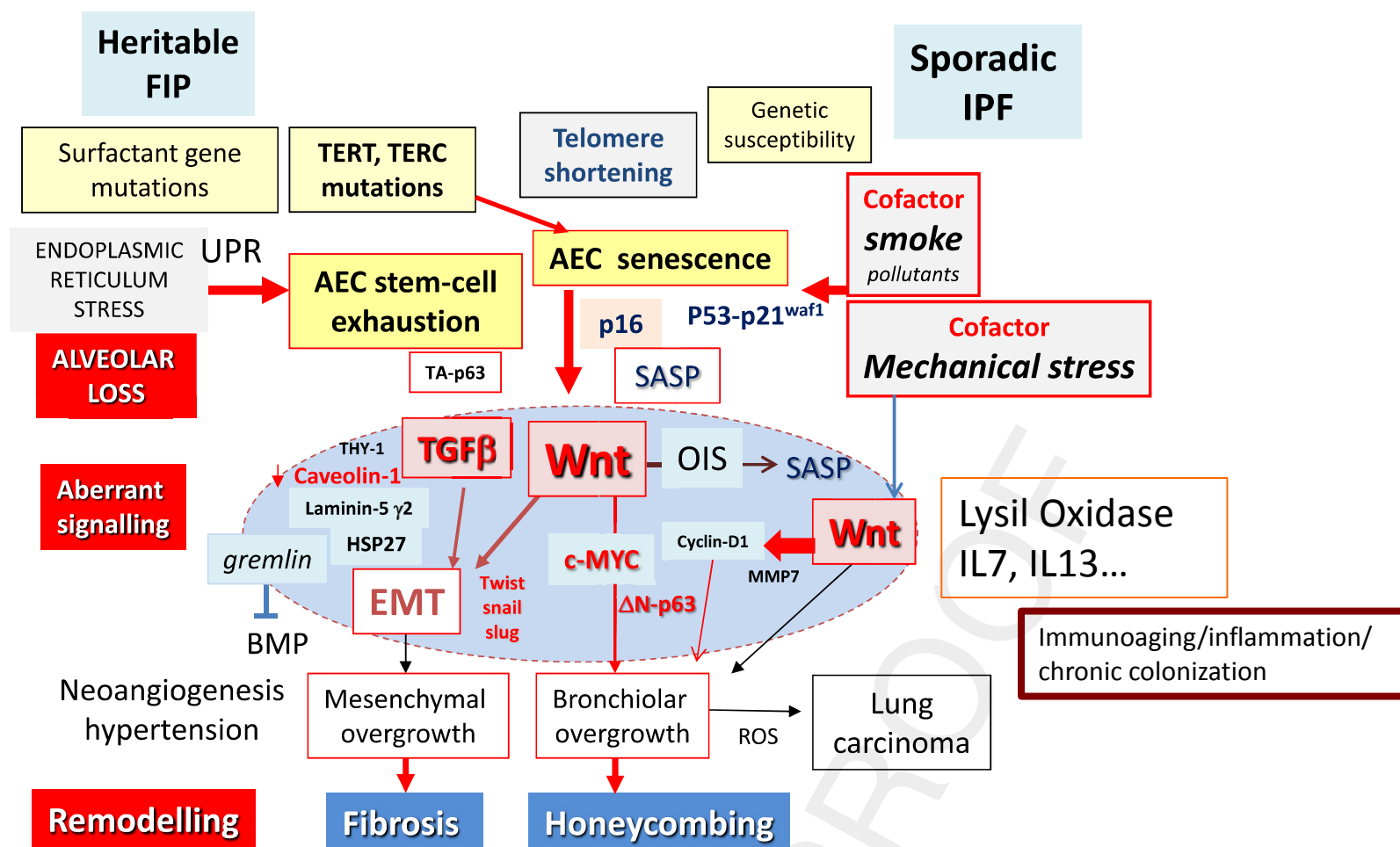


Fig 8. General scheme describing the different steps of idiopathic pulmonary fibrosis pathogenesis as proposed in this review.

